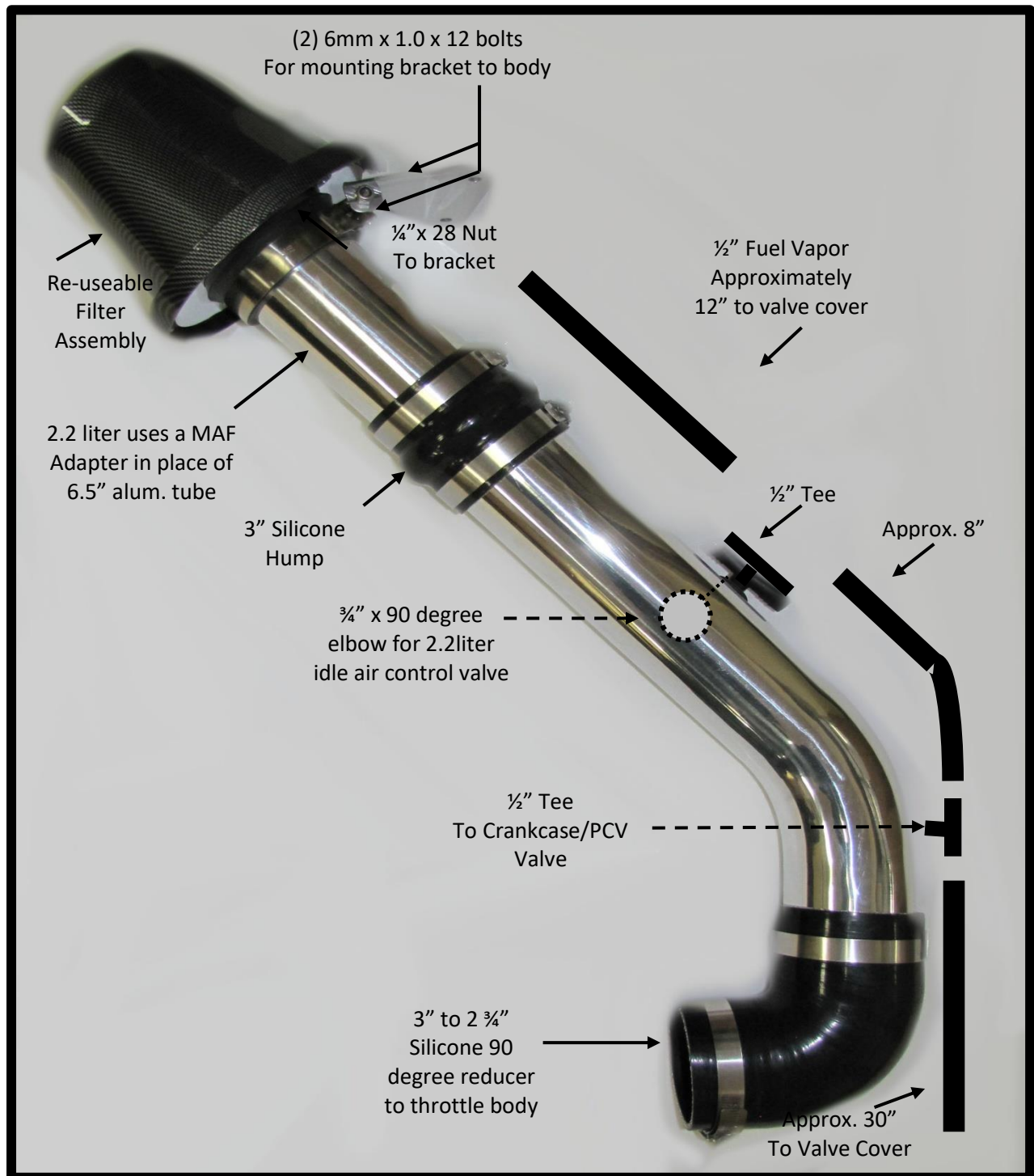


Intake Diagram



Air Intake and Filter

1. Install the 2 ¾" to 3" silicone 90 degree elbow on the throttle body. Leave the clamps loose so that it can be turned and adjusted if needed. This can be trimmed to fit a little better if the elbow is too compressed as seen in (Fig.1). Trim the throttle body side so there is more clearance from the fire wall.
2. Install the long aluminum intake and attach the silicone hump or coupler to the rear end of it (Fig.2).
3. Install the air filter holding bracket at the edge of the driver's side tail light cavity. There are 2 existing threaded holes at the edge ready to accept the provided bolts. Install the bracket with the tab facing up ready to accept the T bolt clamp on the mouth of the filter (Fig.3).
4. Mount the air filter and the 6 ½" aluminum intake tube to the silicone hump (Fig.4). The T bolt clamp on the mouth of the cone filter gets installed into the tab on the air filter bracket you mounted to the edge of the tail light cavity. After these are tight you adjust and tighten your worm drive clamps on the silicone hump and the elbow at the throttle body.
5. Follow the diagram in this manual for the intake and hook up the ½" breather hoses from the valve cover vents to the intake tube and PCV valve (Fig.5).
6. "Note some 2.5 L engines have the PCV valve in the block rather than the plenum. In these applications the valve covers vent only to the tee in the intake; the tee to the crankcase/PCV valve, shown in the diagram, is not used."
6. Final air intake installation image (Fig.6).

Fig.1



Fig.2



Fig.3



Fig.4



Fig.5

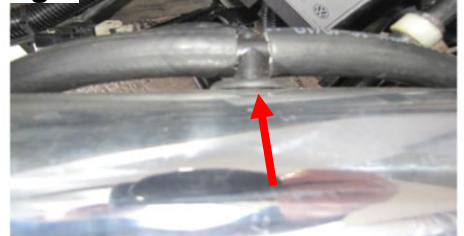


Fig.6



If you are using our enclosed custom air box with replaceable Subaru air filter, please refer to installation instructions found on our website under "Subaru Conversion Air Box" @ rockymountainwesty.com

Air Filter Maintenance

Your RMW conversion kit comes with a cone filter that is reusable / washable. Although it is not a K & N filter, it is very similar. You can find a K & N recharger kit at any auto parts store and treat this filter the same way. Below are instructions on how to clean and recharge your filter. The air filter comes pre-oiled when purchased so you will not need to oil it when installing in your conversion

1. Remove the air filter from the intake system in your van.
2. Remove the 3 screws holding the housing onto the filter.
3. Liberally spray K & N air filter cleaner on both sides of the filter and allow it to soak for 10 minutes to loosen dirt trapped in the filter element. Do not allow cleaner to dry on the filter.
4. Rinse off the filter with cool low-pressure water applied to the clean side which is the inside. You want to flush the cleaner and dirt out of the filter and not trap it on the inside. Continue to rinse the filter until all traces of the filter are gone. It may be necessary to repeat steps 1 + 2.
5. After rinsing, gently shake off excess water and allow filter to dry naturally. Do not use compressed air. The high pressure can damage the pleats on the filter and potentially puncture the foam.
6. After filter is completely dry, apply air filter oil evenly along the crown of each pleat. Allow the oil to wick for approximately 20 minutes. Touch up any light areas on either side of the filter until there is a uniform red color on all areas. Do not over oil the filter as this will cause clogging.

Step # 6 is the same process whether you are using a squeeze bottle or an aerosol can.