

Truck Fridge Install Kit Installation Instructions



Introduction

Thank you for purchasing the Rocky Mountain Westy **Truck Fridge Install Kit**. We pride ourselves in the products we develop and would not bring an item to market that we did not fully believe in.

The **Truck Fridge Install Kit** allows you to install a Truck Fridge TF49 into your van without the need of having to fabricate your own mounts and supports. We've done the measuring, design and fabrication for you, making the install process painless.

Before You Get Started

It is recommended that you read through these instructions fully before beginning the installation process. This step will help you understand the entire process beforehand which will make the installation go smoothly. The Vanagon depicted in this installation is a 1987 Vanagon Westfalia.

Tools Required:

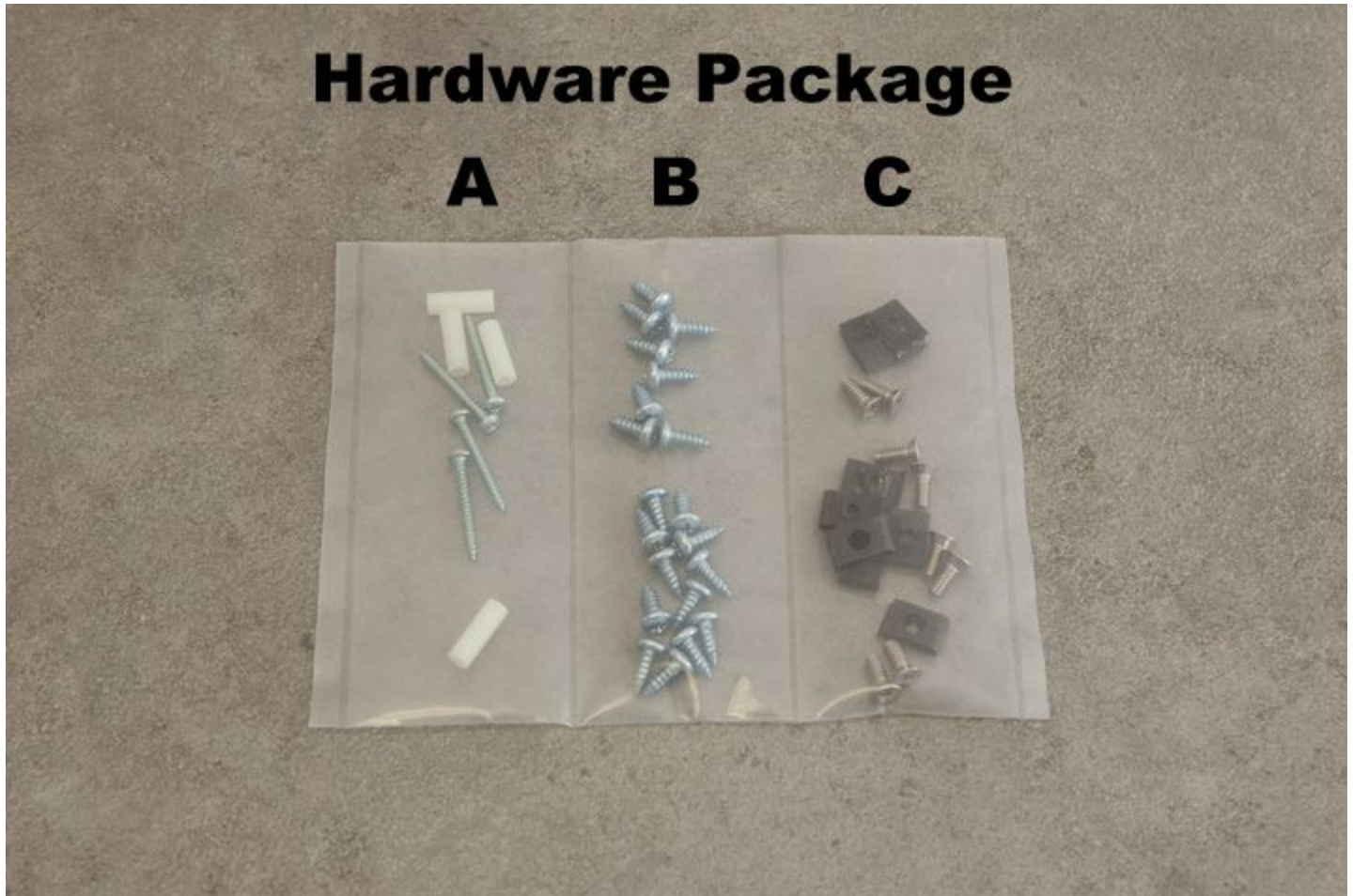
- Small Flat Head Screwdriver
- Flat Head Screwdriver
- Small Phillips Head Screwdriver
- Phillips Head Screwdriver
- 20mm Wrench
- 21mm Wrench
- 5/8" Wrench
- Drill
- Phillips Head Drill Bit
- Drill Bit Extension
- Straight/Edge or Level
- Small Flat Handsaw
- Hammer
- Sharpie
- Black RTV Silicone Sealant
- Yellow Teflon Tape

Parts Included:

- Side Support Mounting Plate (x 2)
- Support Bracket (x 2)
- Front Face Plate
- Front Propex Ducting Plate
- T-Moulding
- Aluminum Vent Blanking Plate
- 1 1/4" LG Sheet Metal Screw (x 4 - Pack A)
- 3/4" LG Nylon Spacer (x 4 - Pack A)
- 1/2" LG Self Tapping Screw (x 20 - Pack B)
- #10-24 Machine Screw (x 8 - Pack C)
- #10-24 Cage Nut (x 8 - Pack C)
- Brass Plug (x 1 - Pack C)

Supplied Hardware

Included in the **Truck Fridge Install Kit** is a **Hardware Package**. This **Hardware Package** is broken up into three sections. Each section will be referenced throughout the course of the installation. The separation of hardware will help you with the installation.



Removing The Stock Fridge

This is the stock interior of a 1987 Vanagon Westfalia Camper. Prior to any work please make sure that the propane tank valve is in the **CLOSED** position.

The two large cabinet doors and the drawer need to be removed in order to access the fridge mounting screws. Open each door fully and lift upwards causing the doors to slide off the cabinet hinges completely. The drawer has two small plastic keepers located underneath the drawer. Press the keepers downwards and slide the drawer out completely. Also loosen and remove the rear table and leg completely so that we have access to the flat cabinet storage area.



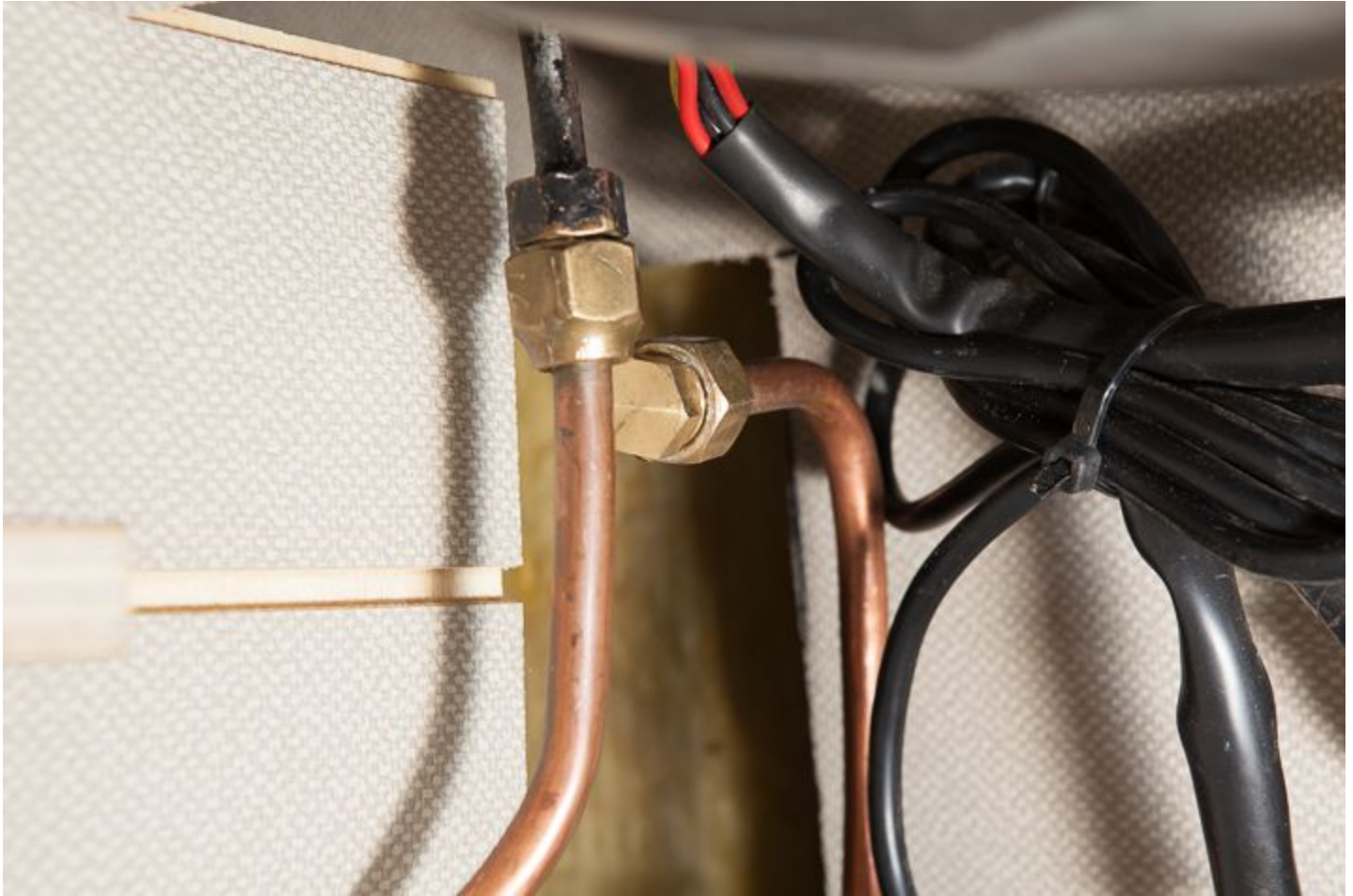
Now that the cabinet doors and drawer are removed you'll notice the AC power outlet that resides underneath the sink area. Unplug the stock fridge's AC power cord as well as the white plastic plug that supplies DC power to the fridge.



The copper propane line closest to the driver's side of the van is the supply feed for the fridge. This line needs to be disconnected from the fridge. Use a **20mm Wrench** on the fridge side coupling and a **21mm Wrench** on the brass collar in order to disconnect the line from the fridge.



Lightly bend the disconnected propane line towards the front of the van so that you have ample access to the open end. Wrap the threads of the **Brass Plug** with **Yellow Teflon Tape** and hand thread the brass collar onto the **Brass Plug**. Use a **5/8" Wrench** on the Brass Plug and a **21mm Wrench** on the collar in order to fully tighten the brass collar.



Use a **Small Flat Head Screwdriver** to carefully remove the 5 plastic screw cap covers on the face of the stock fridge surround frame. These screw caps should pop right off and will not need to be reused in case they're damaged in the process.



Using a **Phillips Screwdriver**, remove the 5 screws from the face of the stock fridge surround frame.



Once all 5 screws are removed from the face of the stock fridge surround frame, pull the frame from the hinge side gently outward (towards the sliding door) about an inch then slide the whole frame towards the front of the van. This motion should release the frame from the tongue and groove connection on the left side of the fridge opening.



There are four screws located inside the cabinets that hold the stock fridge in place.



Using a **Phillips Head Screwdriver** remove the fridge mounting screw that's located in the flat cabinet area to the upper left side of the stock fridge.



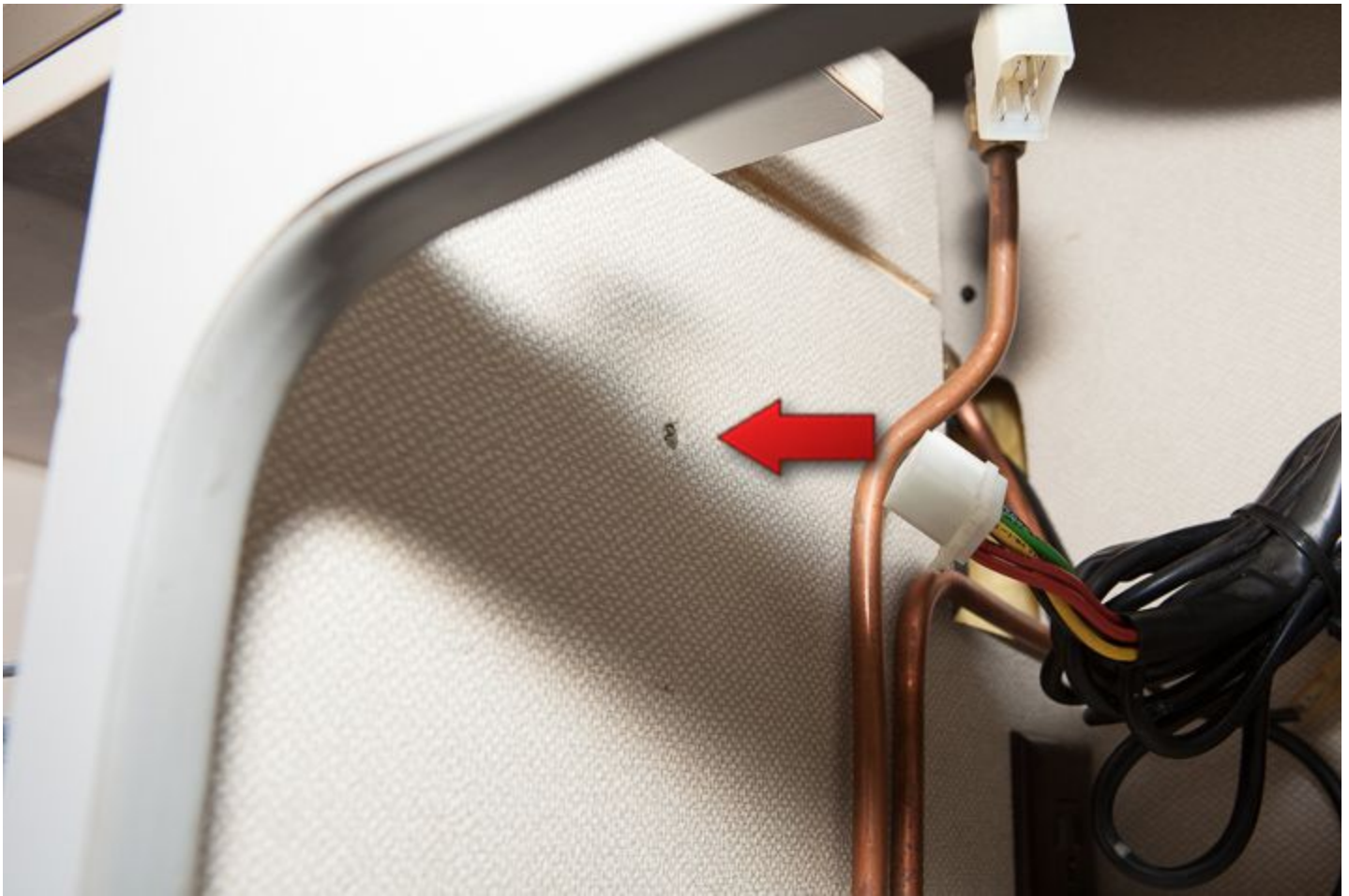
Using a **Phillips Head Screwdriver** remove the fridge mounting screw that's located in the small cubby hole cabinet area to the lower left side of the stock fridge.



Using a **Phillips Head Screwdriver** remove the fridge mounting screw that's located in cabinet area to the lower right side of the stock fridge.



Using a **Phillips Head Screwdriver** remove the fridge mounting screw that's located in cabinet area to the upper right side of the stock fridge.



Using a **Phillips Head Screwdriver** remove the three screws that mount the Flue Vent to the side of the van.



Using a **Flat Head Screwdriver** remove the two small mounting screws near the center of the Flue Vent. These screws are the last two mounting screws that hold the stock fridge in place.



Carefully slide the stock fridge out of the cabinet.



Be extra careful not to damage any of the cabinet facing or metal work when removing the stock fridge.



Now the stock fridge is completely removed.



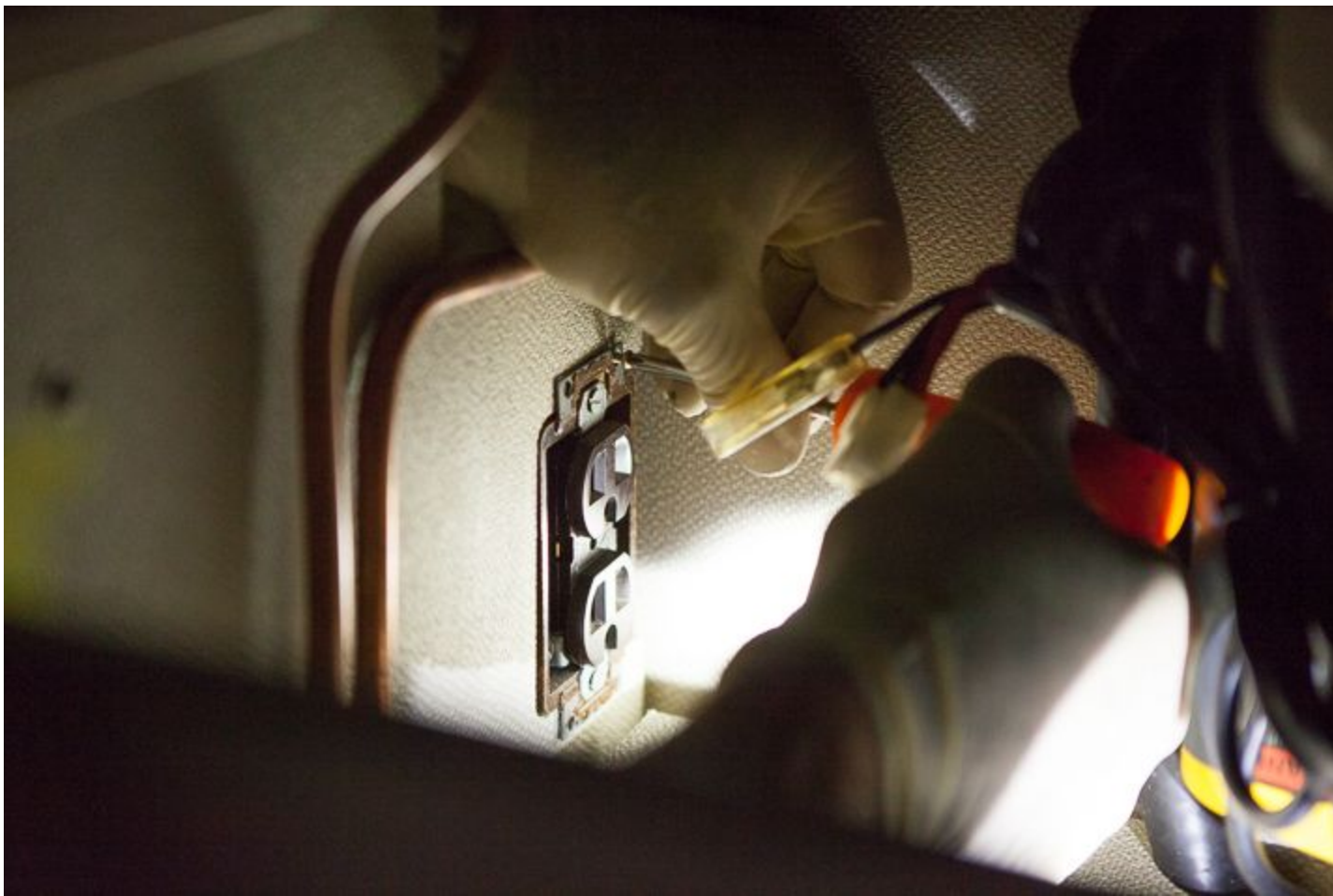
Prepping The Cabinet

Using a **Small Flat Head Screwdriver** remove the one screw holding the faceplate of the AC outlet in place. Remove the faceplate exposing the AC outlet and it's four small mounting screws.



The current location of the AC Outlet protrudes into the fridge space too far so we need to modify its location slightly in order to make room for the Truck Fridge.

Using a Small Phillips Head Screwdriver remove the four small phillips head screws mounting AC Outlet box to the cabinet wall.



Use the included **1 1/4" LG Sheet Metal Screws** and **3/4" LG Nylon Spacers** located in **Hardware Package A** in order to offset the AC Outlet off of the cabinet wall.



All four sets of **1 1/4" LG Sheet Metal Screws** and **3/4" LG Nylon Spacers** are installed.



Use a **Small Flat Head Screwdriver** in order to reattach the AC Outlet faceplate back in place.



Use a **Small Phillips Head Screwdriver** to remove the one phillips head screw that's found under the stove metal faceplate. This screw is there to help secure the faceplate in place. We need to remove it as it'll interfere with our kit otherwise. The faceplate is secured in place with other screws as well so not having this one installed won't hurt anything.



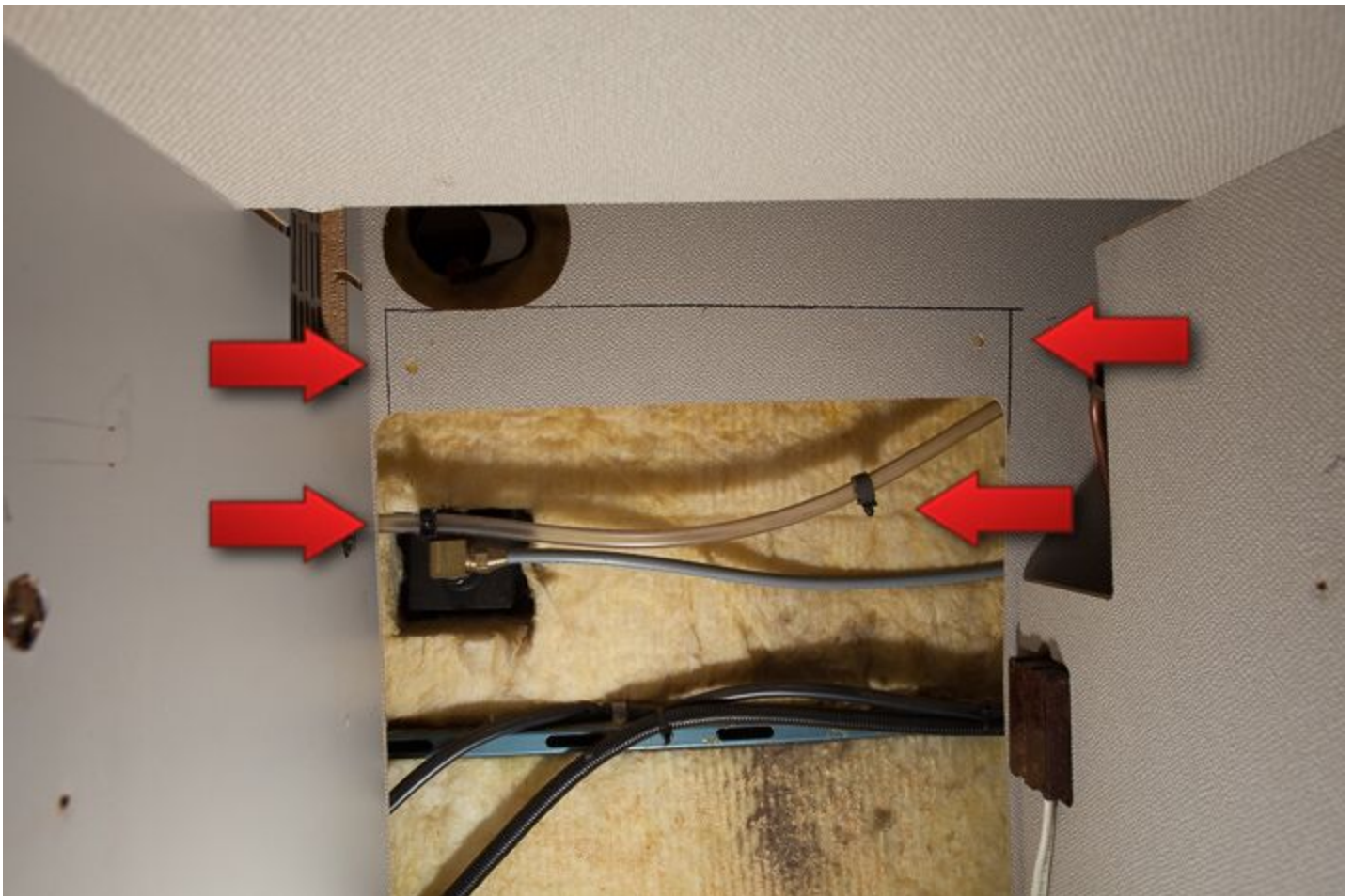
Use a **Phillips Head Screwdriver** to remove the bracket on the right side of the fridge opening. This bracket was used to mount the fridge surround to the cabinet. This is no longer needed and needs to be removed in order to not interfere with our kit.



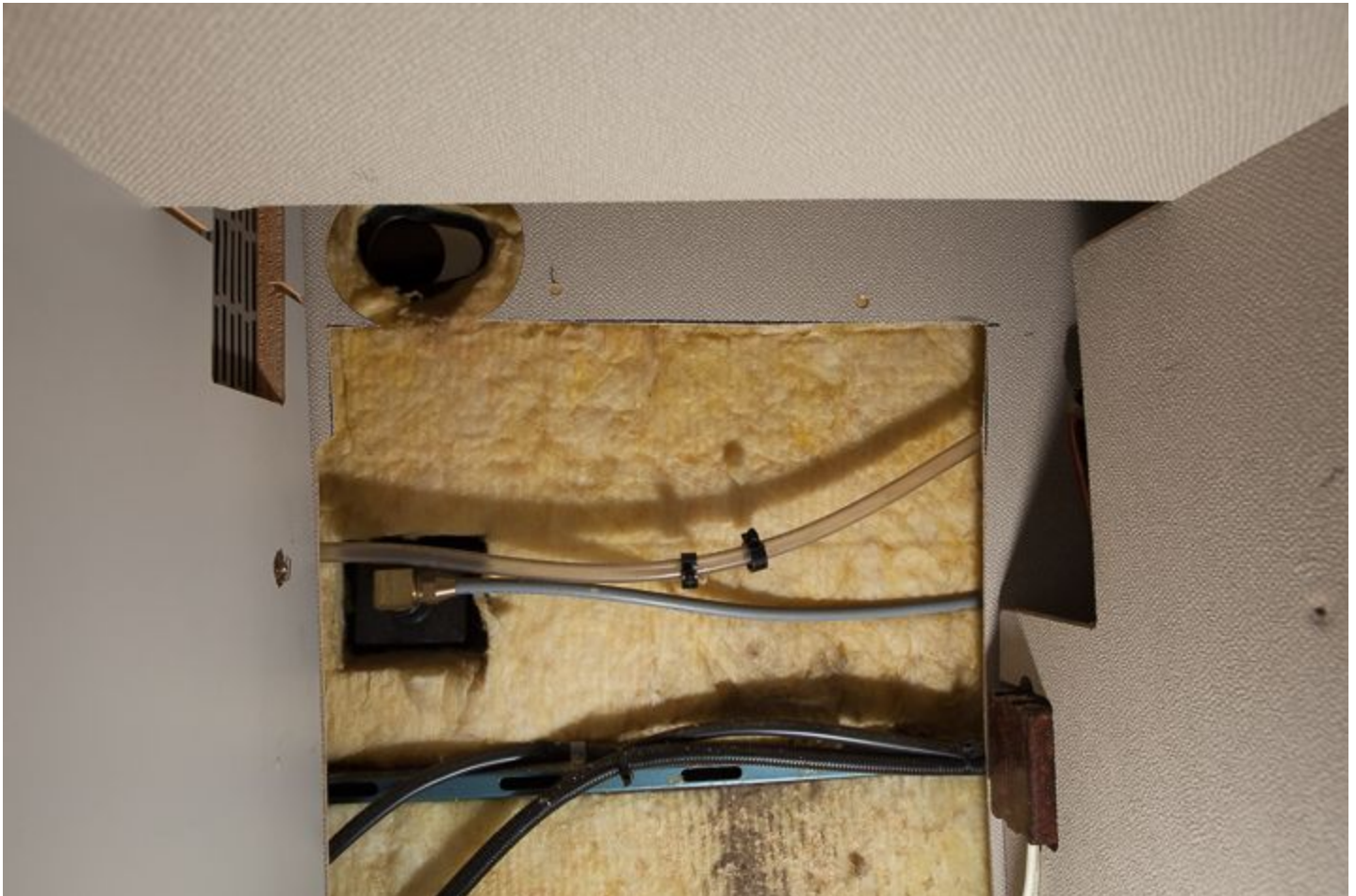
The opening in the rear fiberboard wall needs to be enlarged in order to accommodate the extra height of the Truck Fridge. Use a **Straight Edge** and a **Sharpie** to mark a cutline on the fiberboard as shown. We need to extend the vertical opening up so that it meets the bottom of the oval opening.



There are two clips holding a water line to the back side of the fiberboard wall that we need to remove. Press the clips back through the fiberboard so that they're clear and place the water line down low below the area we need to remove.



Use a **Small Flat Handsaw** in order to cut the fiberboard back wall out. Be very careful not to cut into the water line that we just freed from the fiberboard wall.



Installing The Truck Fridge Install Kit

Place one of the included **Support Brackets** along the left wall of the fridge opening. Slide it towards the back wall until the vertical leg of the **Support Bracket** is flush with the edge of the cabinet floor.

Use a **Drill, Drill Bit Extension** and a **Phillips Head Drill Bit** in order to secure five **1/2" LG Self Tapping Screws** that are in **Hardware Package B** into the left side of the cabinet wall. This will secure the **Support Bracket** in place.



Repeat the process for the **Support Bracket** on the right side of the fridge opening. In our case you'll notice we can't locate the vertical leg of the **Support Bracket** far enough to the rear so it's flush with the edge of the cabinet floor. The small section of wood stapled to the wall is too far forward to allow it.

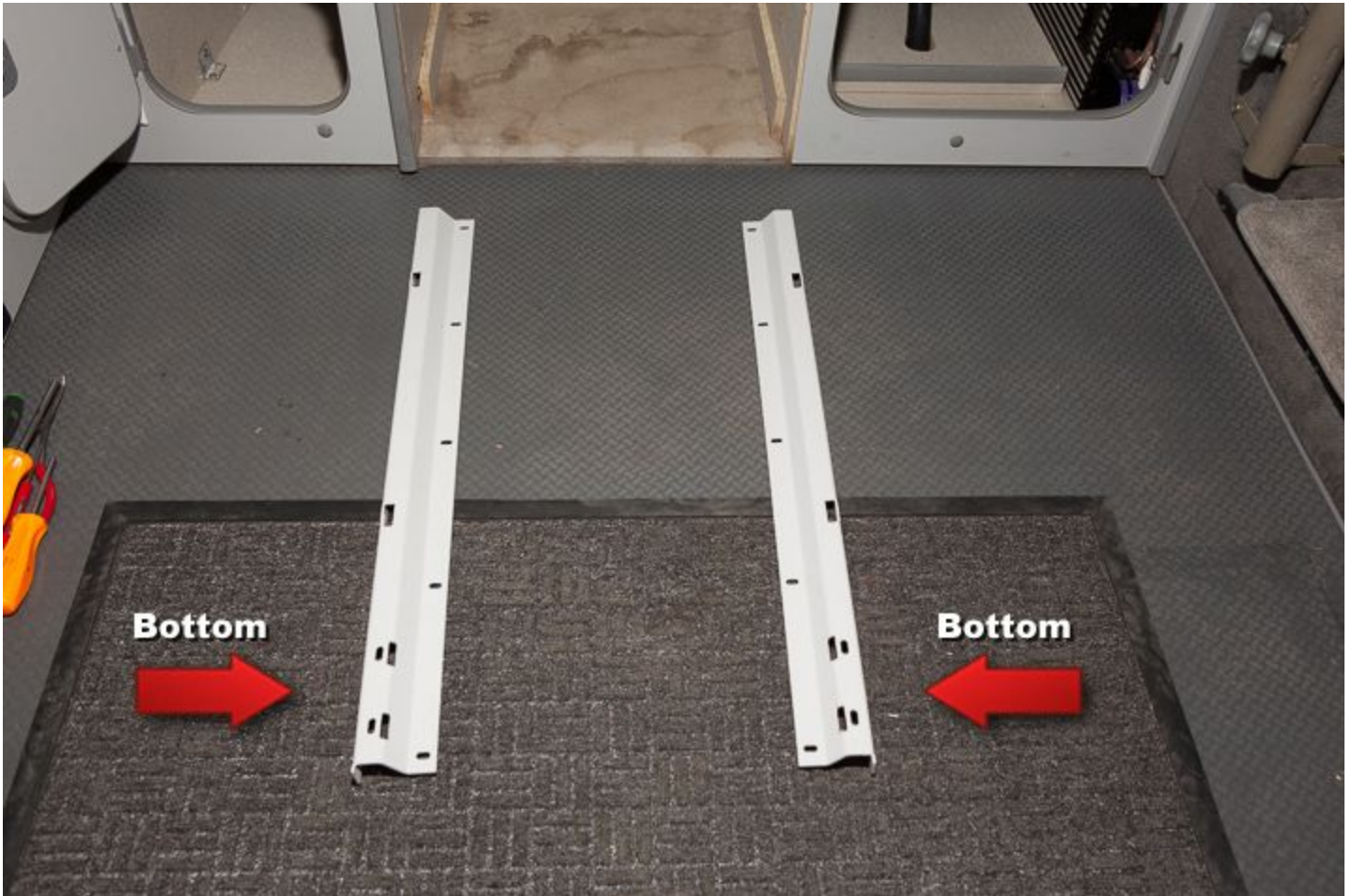
Use a **Flat Head Screwdriver** to pry out the section of wood and remove it so that we can line up the vertical leg of the **Support Bracket** properly.



Use a **Drill, Drill Bit Extension** and a **Phillips Head Drill Bit** in order to secure five **1/2" LG Self Tapping Screws** that are in **Hardware Package B** into the right side of the cabinet wall. This will secure the **Support Bracket** in place.

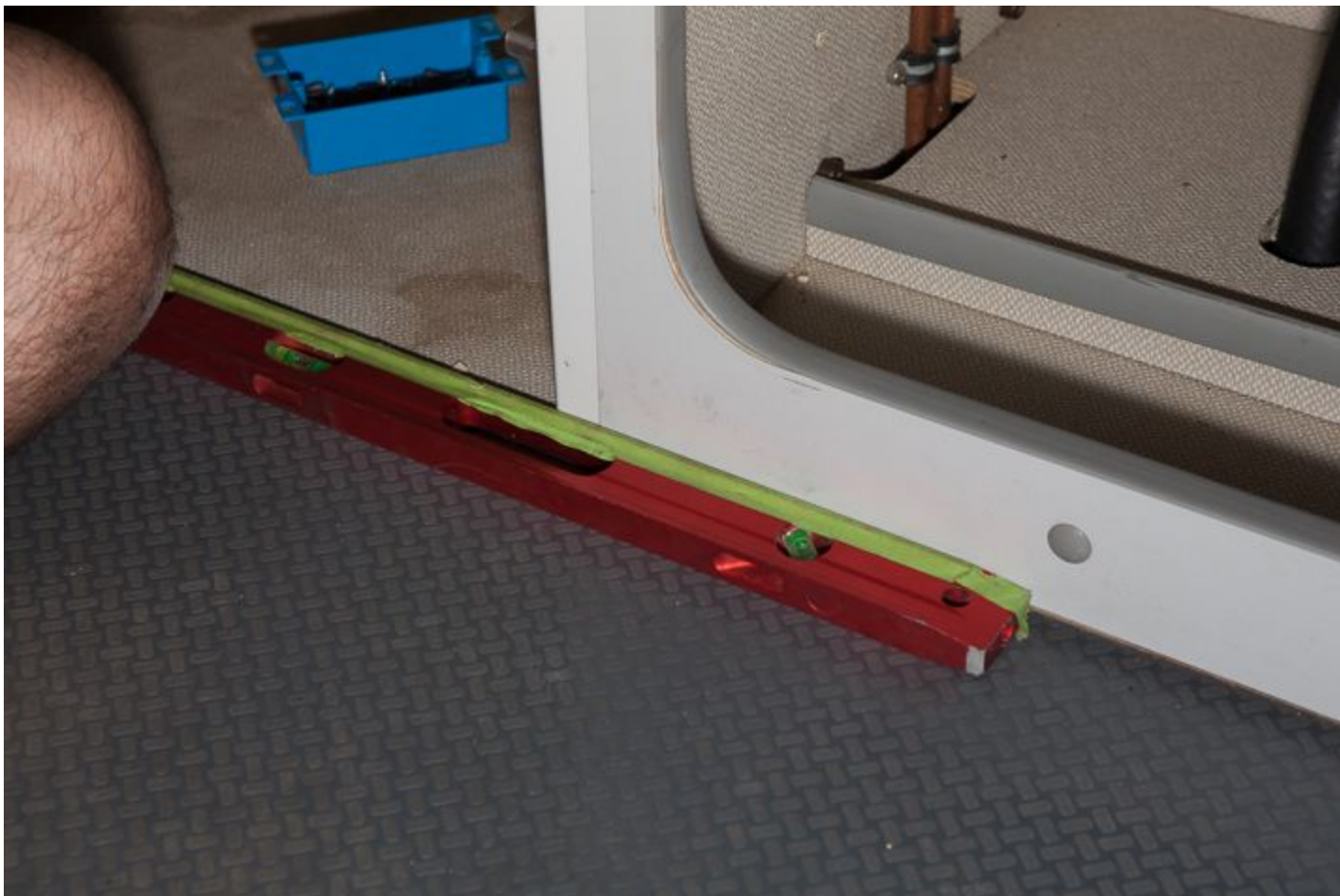


Place both **Side Support Mounting Plates** onto the floor in this orientation. You'll notice the four slots closest together in each of the plates are noted as the bottom. Getting this orientation correct prior to installation is key as these four slots is where you'll install the **Front Face Plate** later in the installation.



Place a level on the floor and butt it up against the front face of the galley cabinet. We'll use this level in order to properly locate our two **Side Support Mounting Plates** so that they're flush with the rest of

the cabinet.



Place the right **Side Support Mounting Plate** into the fridge opening. Slide the **Side Support Mounting Plate** outward until the front of the **Side Support Mounting Plate** meets the backside of the level you're using as a guide.

Use a **Phillips Head Screwdriver** and 5 included **1/2" LG Self Tapping Screws** from **Hardware Package B** in order to secure the **Side Support Mounting Plate** to the cabinet wall.



Place the left **Side Support Mounting Plate** into the fridge opening. Slide the **Side Support Mounting Plate** outward until the front of the **Side Support Mounting Plate** meets the backside of the level you're using as a guide.

Use a **Phillips Head Screwdriver** and 5 included **1/2" LG Self Tapping Screws** from **Hardware Package B** in order to secure the **Side Support Mounting Plate** to the cabinet wall.



Insert the included **T-Moulding** in the gap in between the stock cabinet face and the newly installed **Side Support Mounting Plate**. This moulding should simply be pressed in by hand.

If you have difficulty inserting the **T-Moulding** into place you can loosen the five **Self Tapping Screws** that are holding the **Side Support Mounting Plate** in place by a few turns. Slide the **T-Moulding** in place then retighten the **Self Tapping Screws**.



Slide a **U-Nut** from **Hardware Package C** into each of the four slots in each of the **Side Support Mounting Plates**. These **U-Nuts** should have their flat side facing outwards as shown.



All eight **U- Nuts** from **Hardware Package C** are in place.



Place the **Front Face Plate** in between the two **Side Support Mounting Plates**. This fitment should be pretty snug so be careful when placing it.

Use a **Phillips Head Screwdriver** to attach two **Machine Screws** from **Hardware Package C** into each of the **Side Support Mounting Plates**.



The **Truck Fridge Install Kit** is completed. Your galley is now ready to accept your Truck Fridge TF49.



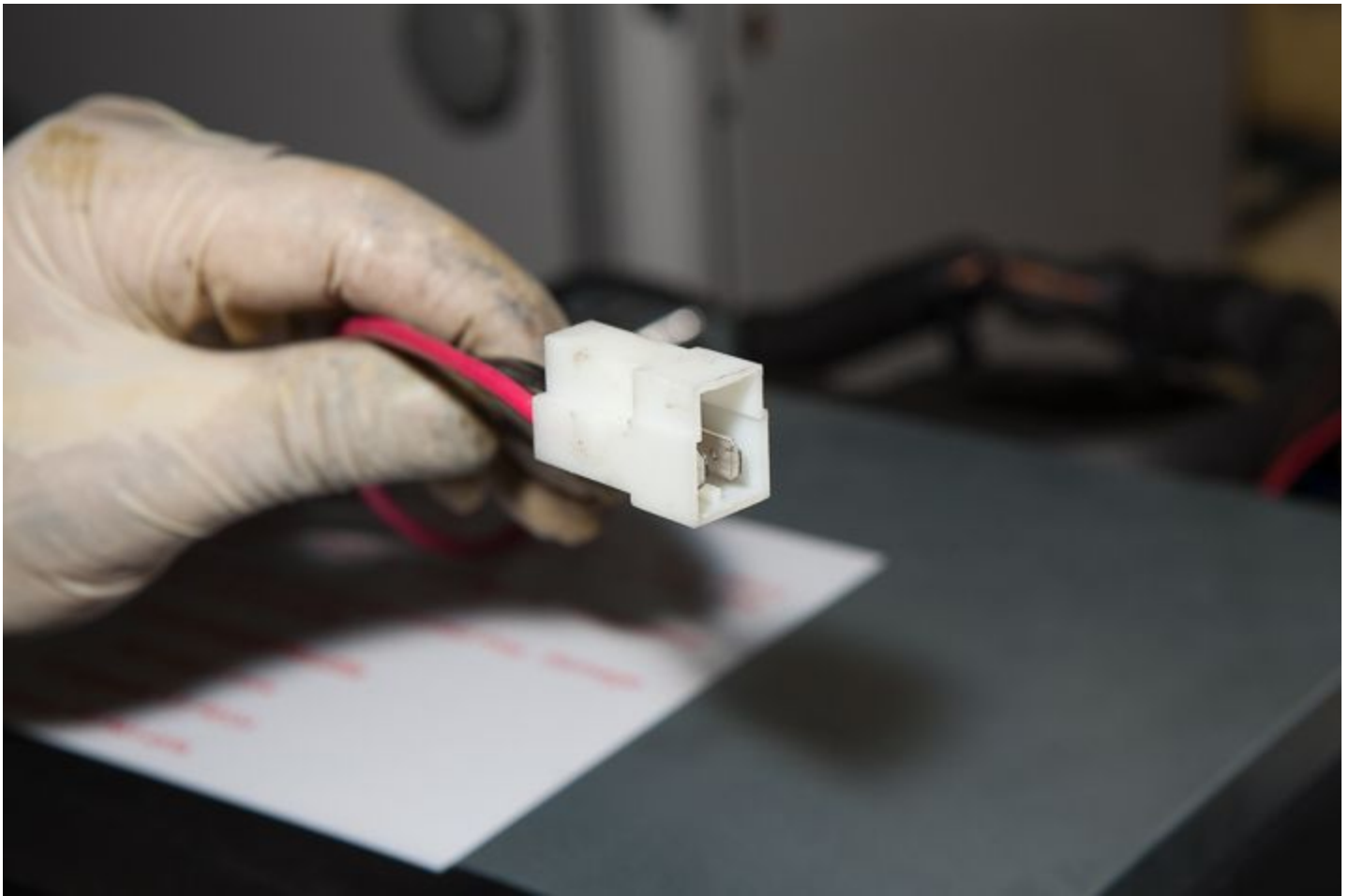
Truck Fridge Prep & Installation

The stock fridge that you removed earlier has a short electrical pigtail with a stock white plug. Use a **Small Flat Head Screwdriver** to press back the small retaining clips on the stock wiring which will free the stock wiring from the plug.



The new Truck Fridge TF49 has its own plug attached to their wiring. We need to remove their plug using a **Small Flat Head Screwdriver** to press back the small retaining clips on the wiring. Once the wires are freed we can place the Truck Fridge TF49 wires into the white stock plug that we removed from the old stock fridge.

Slide the Truck Fridge TF49 wires into the white stock plug as shown. Take careful note of the wire and plug orientation as this is **VERY** important in order to make sure the polarity is correct. The wires should “click” into place once the retaining clips grab ahold of the new plug.



Carefully slide the new Truck Fridge into the front portion of the cabinet opening only.



Reach through the drawer opening and into the area behind the fridge in order to grab ahold of the new AC power cord and the DC power cord that we just added the stock white plug to. Feed these through to the drawer side of the cabinet so that they're easily accessible.

Once you've fed the cord and wire over you can continue to slide the Truck Fridge TF49 all the way back into place.



The front flange of the Truck Fridge TF49 should fit flush against the two **Side Support Mounting Plates**. Use a **Phillips Head Screwdriver** in order to attach four **Machine Screws** from **Hardware Package C** into front flange of the fridge. These four screws will secure the Truck Fridge TF49 to the **Side Support Mounting Plates** we installed earlier.

Plug the AC Cord into the AC Outlet that sits inside the cabinet and take the new Truck Fridge wiring with the old stock plug and plug it back into the other half of the plug that's in the same area. Prior to plugging them together be sure to double check that the polarity is correct. The red wire from the fridge should line up with the red wire on the van's plug and the black wire from the fridge should line up with the black wire on the van's plug. Once you're certain all is correct, connect the plugs together.



Add a ring of **Black RTV Silicone Sealant** to the flat area of the Flue Vent.



Place the **Aluminum Vent Blanking Plate** in place making sure you line up the notches in the plate with the screw holes. Reference this photo for orientation. Once in place twist the **Aluminum Vent Blanking Plate** about a half an inch and then back. This will insure that the **Aluminum Vent Blanking Plate** has a good coating of **Black RTV Silicone Sealant**.



Use a **Phillips Head Screwdriver** in order to reattach the three phillips head screws that mount the Flue Vent Cover back in place.



Now this Flue Vent is completely sealed since it's no longer needed for the new Truck Fridge TF49.



Installation Complete

You have now finished the Rocky Mountain Westy **Truck Fridge Install Kit** installation. Simply reattach the cabinet door and reinsert the cabinet drawer in place.



Thank you for your continued support of Rocky Mountain Westy products....